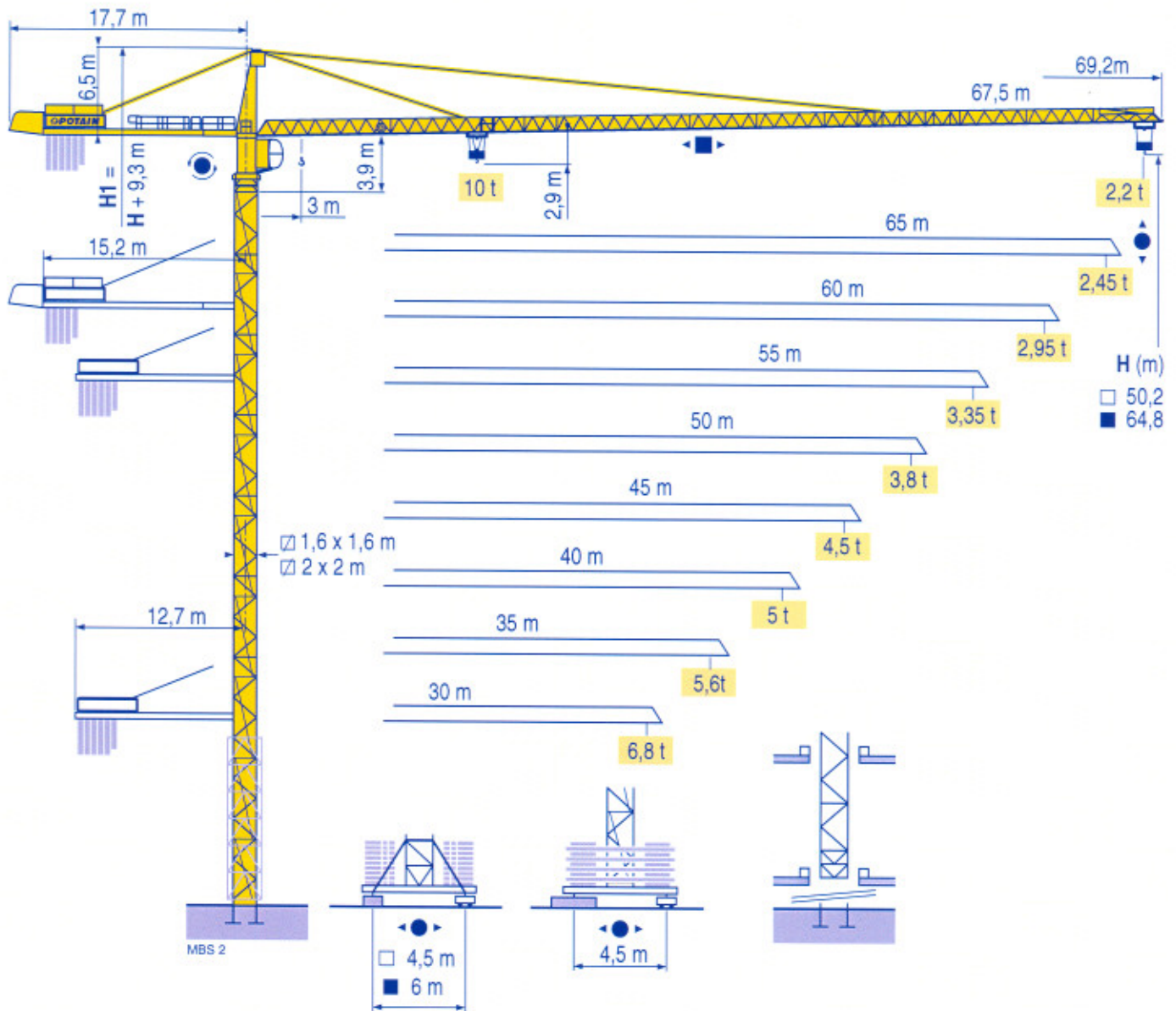


POTAIN

MD 238 A J10



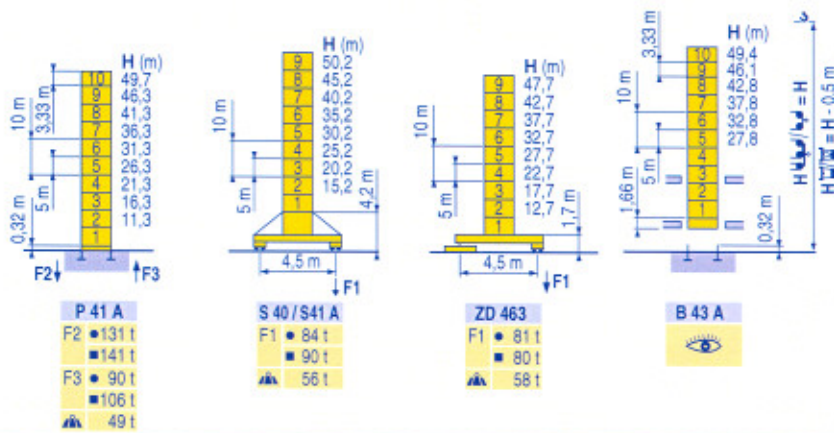
TOPKIT

CE FEM 1.001-A3

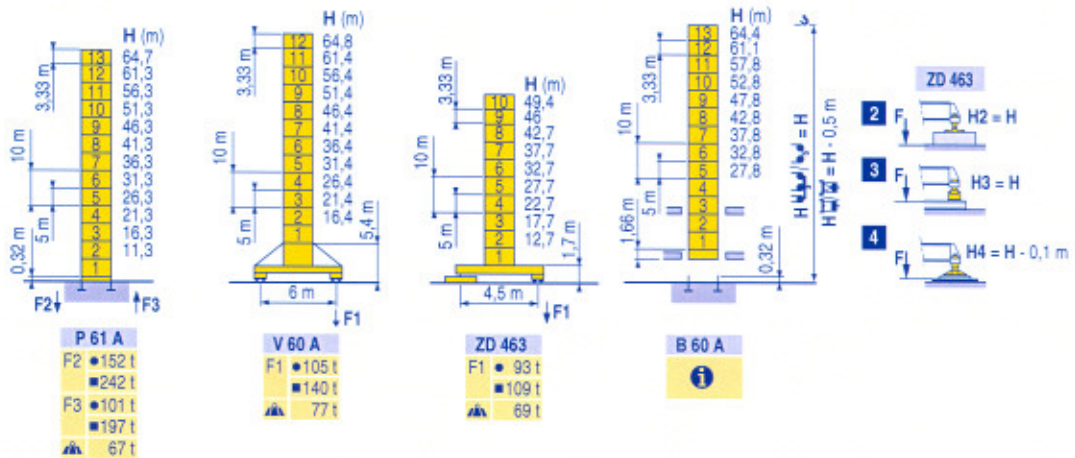
Manitowoc
Crane Group

Mat / Réactions \square 1,6 m
 Mast / Eckdrücke \square 30 m = 60 m
 Masts / Reactions
 Mástil / Reacciones
 Torre / Reazioni
 Tramo / Reações

M65 1

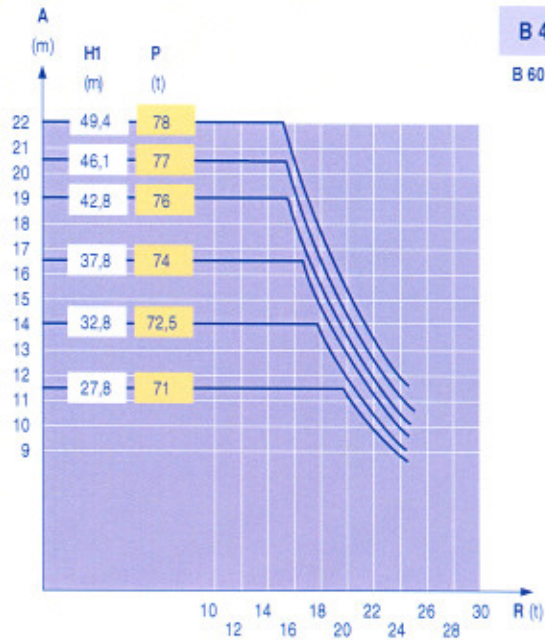
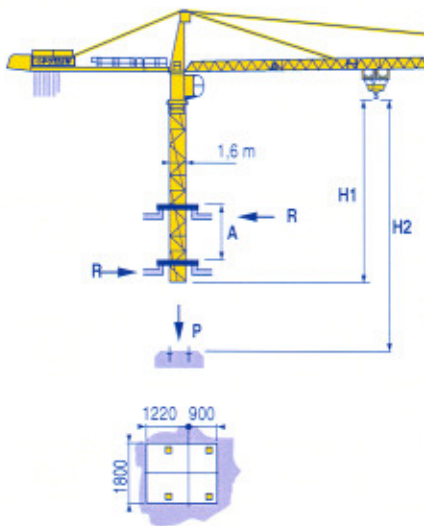


\square 2 m
 \square 30 m = 67,5 m



Télescopage sur dalles
 Kletterkrane im Gebäude
 Climbing crane
 Telescopage gruas trepadoras
 Gru in cavedio
 Telescopagem sobre lajes

M65 1



B 43 A
 B 60 A

TOPKIT
 MD 238 A J10

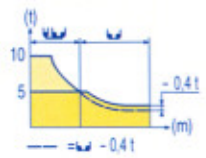
POTAIN

F	D	GB	E	I	P
● Réactions en service	● Reaktionskräfte in Betrieb	● Reactions in service	● Reacciones en servicio	● Reazioni in servizio	● Reações em serviço
■ Réactions hors service	■ Reaktionskräfte außer Betrieb	■ Reactions out of service	■ Reacciones fuera de servicio	■ Reazioni fuori servizio	■ Reações fora de serviço
⚖ A vide sans lest (ni train de transport) avec flèche et hauteur maximum.	⚖ Ohne Last, Ballast (und Transportachse), mit Maximalausleger und Maximalhöhe.	⚖ Without load, ballast (or transport axes), with maximum jib and maximum height.	⚖ Sin carga, sin lastre, (ni tren de transporte), flecha y altura máxima.	⚖ A vuoto, senza zavorra (ne assai di trasporto) con braccio massimo e altezza massima.	⚖ Sem carga (nem trem de transporte)- sem lastro com lança e altura máximas.
ℹ Nous consulter	ℹ Auf Anfrage	ℹ Consult us	ℹ Consultarnos	ℹ Consultateci	ℹ Consultar-nos

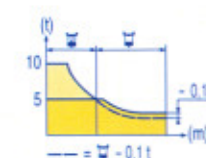
Courbes de charges
Lastkurven
Load diagrams
Curvas de cargas
Curve di carico
Curva de cargas

MES 1

Span (m)	10	15	20	25	30	35	40	45	50	55	60	65	67,5
67,5 m 3	17,6	20	22	25	27	30	31,6	34	35	37	40	42	45
	10	8,6	7,7	6,6	6,1	5,3	5	4,8	4,5	4,1	3,9	3,6	3,4
65 m 3	18,4	20	22	25	27	30	32	33,1	35,7	37	40	42	45
	10	9,1	8,2	7	6,4	5,6	5,2	5	4,8	4,4	4,1	3,8	3,6
60 m 3	19,7	20	22	25	27	30	32	35	35,6	38	40	42	45
	10	9,8	8,8	7,6	6,9	6,1	5,7	5,1	5	4,7	4,5	4,1	3,9
55 m 3	20,1	22	25	27	30	32	35	36,3	38,8	40	42	45	50
	10	9	7,8	7,1	6,3	5,8	5,2	5	4,8	4,6	4,2	4	3,7
50 m 3	20,3	22	25	27	30	32	35	36,8	39,3	40	42	45	50
	10	9,1	7,9	7,2	6,4	5,9	5,3	5	4,9	4,6	4,3	4,1	3,8
45 m 3	21,2	22	25	27	30	32	35	37	38,4	41	42	45	
	10	9,6	8,3	7,6	6,7	6,2	5,6	5,2	5	4,9	4,5		
40 m 3	21,3	22	25	27	30	32	35	37	38,5	40			
	10	9,6	8,3	7,6	6,7	6,2	5,6	5,3	5	5			
35 m 3	21,3	22	25	27	30	32	35						
	10	9,6	8,3	7,6	6,7	6,2	5,6						
30 m 3	21,4	22	25	27	30								
	10	9,7	8,4	7,7	6,8								



Span (m)	10	15	20	25	30	35	40	45	50	55	60	62	65	67,5
67,5 m 2,5	17,9	20	22	25	27	30	32,3	32,9	35	37	40	42	45	47
	10	8,8	7,9	6,8	6,2	5,5	5	4,7	4,4	4	3,7	3,4	3,2	3
65 m 2,5	18,7	20	22	25	27	30	32	33,9	34,5	37	40	42	45	47
	10	9,3	8,3	7,2	6,5	5,8	5,4	5	4,6	4,2	3,9	3,6	3,4	3,2
60 m 2,5	19,7	20	22	25	27	30	32	35	36	36,7	40	42	45	47
	10	9,8	8,8	7,6	7	6,2	5,7	5,2	5	4,5	4,3	3,9	3,7	3,5
55 m 2,5	20,1	22	25	27	30	32	35	36,7	37,4	40	42	45	47	50
	10	9	7,8	7,2	6,3	5,9	5,3	5	4,6	4,4	4	3,8	3,5	3,4
50 m 2,5	20,4	22	25	27	30	32	35	37,2	37,9	40	42	45	47	50
	10	9,2	7,9	7,3	6,4	6	5,4	5	4,7	4,4	4,1	3,9	3,6	
45 m 2,5	21,3	22	25	27	30	32	35	37	38,8	39,6	42	45		
	10	9,6	8,3	7,6	6,8	6,3	5,7	5,3	5	4,7	4,3			
40 m 2,5	21,5	22	25	27	30	32	35	37	39,3	40				
	10	9,7	8,4	7,7	6,8	6,4	5,7	5,4	5	5				
35 m 2,5	21,5	22	25	27	30	32	35							
	10	9,7	8,4	7,7	6,8	6,4	5,7							
30 m 2,5	21,6	22	25	27	30									
	10	9,8	8,5	7,8	6,9									



Lest de contre-flèche
Gegenauslegerballast
Counter-jib ballast
Lastre de contra flecha
Contrappeso
Lastros da contra lança

MES 1

Span (m)	4 200 - 3 400 - 2 300 kg		4 200 - 700 kg	
	Span (m)	Weight (kg)	Span (m)	Weight (kg)
67,5 m	15,2 m	23 300	15,2 m	23 100
65 m	15,2 m	21 400	15,2 m	21 700
60 m	15,2 m	20 200	15,2 m	20 300
55 m	12,7 m	25 200	12,7 m	24 500
50 m	12,7 m	23 300	12,7 m	23 100
45 m	12,7 m	20 200	12,7 m	19 600
40 m	12,7 m	17 200	12,7 m	17 500
35 m	12,7 m	14 900	12,7 m	15 400
30 m	12,7 m	13 000	12,7 m	13 300

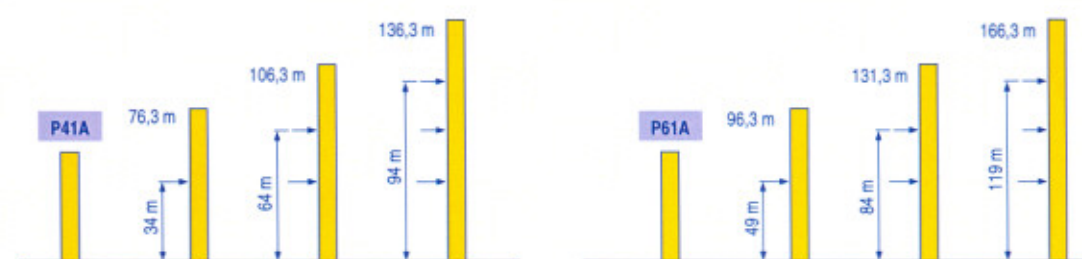
Lest de base
Grundballast
Base ballast
Lastre de base
Zavorra di base
Lastros da base

MES 1

Span (m)	Model	H (m)	Weight (t)											
			1	2	3	4	5	6	7	8	9	10		
1,6 m	S 40 A	H (m)	50,2	45,2	40,2	35,2	30,2	25,2	20,2	15,2				
			(t)	84	72	60	60	60	60	60	60			
1,6 m	ZD 463	H (m)	47,7	42,7	37,7	32,7	27,7	22,7	17,7	12,7				
			(t)	75	70	65	60	60	60	60	60			
2 m	V 60 A	H (m)	64,8	61,4	56,4	51,4	46,4	41,4	36,4	31,4	26,4	21,4	16,4	
			(t)	132	120	96	72	48	48	48	36	36	36	36
2 m	ZD 463	H (m)	49,4	46	42,7	37,7	32,7	27,7	22,7	17,7	12,7			
			(t)	95	75	70	65	65	60	60	60	60		

Ancrages
Verankerungen
Anchorage
Anclaje
Ancoraggio
Ancoragem


MES 1

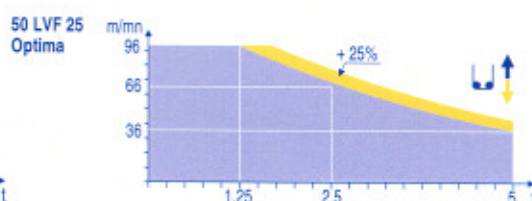
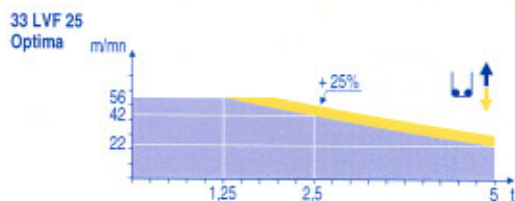









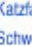










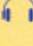






TOPKIT
MD 238 A J10




	F	D	GB	E	I	P
A	Distance entre cadres	Abstand zwischen den Rahmen	Distance between collars	Distanca entra marcos	Distanza fra i telai	Distância entre quadros
H1	Hauteur grue	Kranhöhe	Crane height	Altura grúa	Altezza gru	Altura da grua
P	Poids de la grue(en service)	Krangewicht (in Betrieb)	Crane weight (in service)	Peso de la grúa (en servicio)	Peso della gru (in servizio)	Peso da grua (em serviço)
R	Réaction horizontale	Horizontalkräfte	Horizontal reaction	Reaccion horizontal	Reazione orizzontale	Reacção horizontal
	Voir télescope sur dalles	Siehe Kletterkrane im Gebäude	See climbing crane	Veja grua trepadora	Consultare gru in cavedio	Ver telescopagem sobre lages

				↕ ↑					↕ ↕ ↑					ch - PS hp	kW	
↕	33 LVF 25 Optima	m/min	1,8 → 7,4 → 22 → 28 → 42 → 56	0,9 → 3,7 → 11 → 14 → 21 → 28	30	22	321 m	↕ ↕ ↑	↕ ↕ ↑	↕ ↕ ↑	↕ ↕ ↑	↕ ↕ ↑	↕ ↕ ↑	↕ ↕ ↑	↕ ↕ ↑	↕ ↕ ↑
	t	5 5 5 3,75 2,5 1,25	10 10 10 7,5 5 2,5	557 m												
↕	50 LVF 25 Optima	m/min	3 → 12 → 36 → 46 → 66 → 96	1,5 → 6 → 18 → 23 → 33 → 48	50	37	557 m	↕ ↕ ↑	↕ ↕ ↑	↕ ↕ ↑	↕ ↕ ↑	↕ ↕ ↑	↕ ↕ ↑	↕ ↕ ↑	↕ ↕ ↑	↕ ↕ ↑
	t	5 5 5 3,75 2,5 1,25	10 10 10 7,5 5 2,5	557 m												
↔	6 DVF 4	m/min	0 → 50 (10 t) 0 → 100 (5 t) 0 → 120 (2,5 t)					5,5	4							
↻	RVF 152 Optima +	tr/min U/min rpm	0 → 0,8					2 x 5,5	2 x 4							
↻	S 40 A RT 324 R ≥ 10 m	m/min	12,5 - 25					2 x 7	2 x 5,2							
↻	S 41 A RT 443 A1 2V R ≥ 10 m	m/min	15 - 30					4 x 5	4 x 3,7							
↻	ZD 463 RT 443 A1 2V	m/min	15 - 30					4 x 5	4 x 3,7							
↻	V 60 A RT 544 A1 2V R ≥ 13 m	m/min	13,5 - 27					4 x 7	4 x 5,2							
CEI 38		IEC 38		kVA					2000/14							
400 V (+6% -10%) 50 Hz				33 LVF : 50 kVA 50 LVF : 70 kVA												



F	D	GB	E	I	P		
							
Levage	Heben	Hoisting	Elevación	Sollevamento	Elevação		
							
Distribution	Katzfahren	Trolleying	Distribución	Distribuzione	Distribuição		
							
Orientation	Schwenken	Slewing	Orientación	Rotazione	Rotação		
							
Translation	Kranfahren	Travelling	Traslación	Traslazione	Translação		
	Conforme aux directives CEE sur le niveau acoustique		Gemäss EWG-Richtlinien für den Schall-Leistungspegel	In compliance with the EEC Instructions on noise level	Conforme con las directivas CEE sobre el nivel acústico	Conforme alle direttive CEE sul livello acustico	Conforme as directivas CEE sobre o nível acústico

 Document commercial non contractuel. Pour toute information technique se référer à la notice correspondante

Unverbindliches Vertriebsdokument. Für technische Informationen, siehe die entsprechenden Anweisungen.

This commercial document is not legally binding. For any technical information, please refer to the corresponding instructions.

Documento commercial non contractuel. Para cualquier información técnica, ver la noticia correspondiente.

Documento commerciale non vincolante, per tutte le informazioni tecniche fare riferimento al catalogo istruzioni

Documento comercial não contractuel. Para qualquer informação técnica complementar consultar as respectivas instruções

Manitowoc
Crane CARE

POTAIN 
Manitowoc Crane Group



Americas
Tel: +1 920 683 6322
Tel: +1 717 597 8121

Europe - Middle East - Africa
Tel: +(33) 4 72 81 50 00
Tel: +(44) 191 565 6281

Asia - Pacific
Tel: +(65) 6861 7133
Fax: +(65) 6862 4142

www.manitowoccrane.com

18, rue de Charbonnières - B.P.173
69132 ECULLY Cedex - France

Tel. : (33) 4 72 18 20 20
Fax. : (33) 4 72 18 20 00
www.manitowoccrane.com www.potain.com

TOPKIT MD 238 A J10
Réf. 2004 45 MBS 3

Copyright.Reproduction interdite © POTAIN 2004